



The Steel Company of Canada

Lake Erie Works Community Liaison Committee (CLC) Meeting

October 26, 2022



Agenda

Discussion Topics for Today's Meeting



1. Welcome
2. Review and Approval of Agenda
3. Review and Approval of Minutes of 27 July 2022 Meeting
4. Coke Battery Performance – Q3 2022
5. ISO 14001 Environmental Management System Overview
6. CLC Format Discussion
7. Community Feedback
8. Adjournment



Agenda

Discussion Topics for Today's Meeting



1. Welcome
2. Review and Approval of Agenda
3. Review and Approval of Minutes of 27 July 2022 Meeting
4. **Coke Battery Performance – Q3 2022**
5. ISO 14001 Environmental Management System Overview
6. CLC Format Discussion
7. Community Feedback
8. Adjournment



Coke Battery Performance – Method 303

Performance Review – Daily (Q3 2022)



Date	Doors (% Leaks)	Lids (% Leaks)	Off-takes (% Leaks)
2015 Thresholds (July 2 start)	54%	2%	NA
2016 Thresholds	32%	2%	NA
2017-2019 Thresholds	10%	2%	5%
2020 - 2022 Thresholds	5%	1%	4%
July 1 – Sept 30, 2022 Range (Average)	0.0 – 4.44% (0.51%)	0.0 – 1.67% (0.05%)	0.00 – 3.33% (0.14%)

Daily Measurements Performed since May 19

- All weekdays, except for holidays
- 6 Saturdays
- 5 Sundays

Q3 2022 Operational Adjustments

- 1 operational adjustment for lids

Coke Battery Performance – Method 303

Performance Review – 30-Day Rolling Avg. (Q3 2022)



Since the coke battery resuming operations recently after the rehabilitation project, the first day in which the 30-day rolling average data was collected was June 28, 2022

Date	Doors (% Leaks)	Lids (% Leaks)	Off-takes (% Leaks)	Charging (sec) (log avg)
2015 Limits (July 2 start)	38%	0.8%	25%	12 sec
2016 Limits	22.5%	0.8%	15%	12 s
2017-2019 Limits	7%	0.8%	4.2%	12 s
2020 - 2022 Limits	4%	0.4%	2.5%	12 s
July 1-Sept 30, 2022 Range (Average)	0.19 – 0.85% (0.19%)	0.02 – 0.09% (0.05%)	0.00 – 1.33% (0.24%)	1.58 – 8.59s (5.71 s)

Q3 2022 Performance

- In compliance with current limits

Coke Battery Performance – Method 303

Performance Review – Daily Observations. (Q3 2022)



Date	Pushing Emission (opacity %)
2015 Threshold (July 2 start)	≥ 50%
2016 – 2018	≥ 50%
2019	≥ 40%
2020 - 2022	≥ 30%
July 1– Sept 30, 2022 Range (Average)	0 – 21.67% (7.03%)

Q3 2022 Operational Adjustments

- None required

Coke Battery Performance

Additional Items



- There were no community complaints for the period of Q3 2022 related to the cokemaking operations
- MECP invited to provide any verbal comments

Agenda

Discussion Topics for Today's Meeting



1. Welcome
2. Review and Approval of Agenda
3. Review and Approval of Minutes of 27 July 2022 Meeting
4. Coke Battery Performance – Q3 2022
5. **ISO 14001 Environmental Management System Overview**
6. CLC Format Discussion
7. Community Feedback
8. Adjournment



ISO 14001:2015

Environmental Management System (EMS)



ISO 14001:2015

Environmental Management System (EMS)



ISO 14001 sets out the criteria for an environmental management system (EMS) and can be certified to. It maps out a framework that a company or organization can follow to set up an effective EMS.

Designed for any type of organization, regardless of its activity or sector, it can provide assurance to company management and employees as well as external stakeholders that environmental impact is being measured and improved.

ISO 14001:2015

Environmental Management System (EMS)



Why

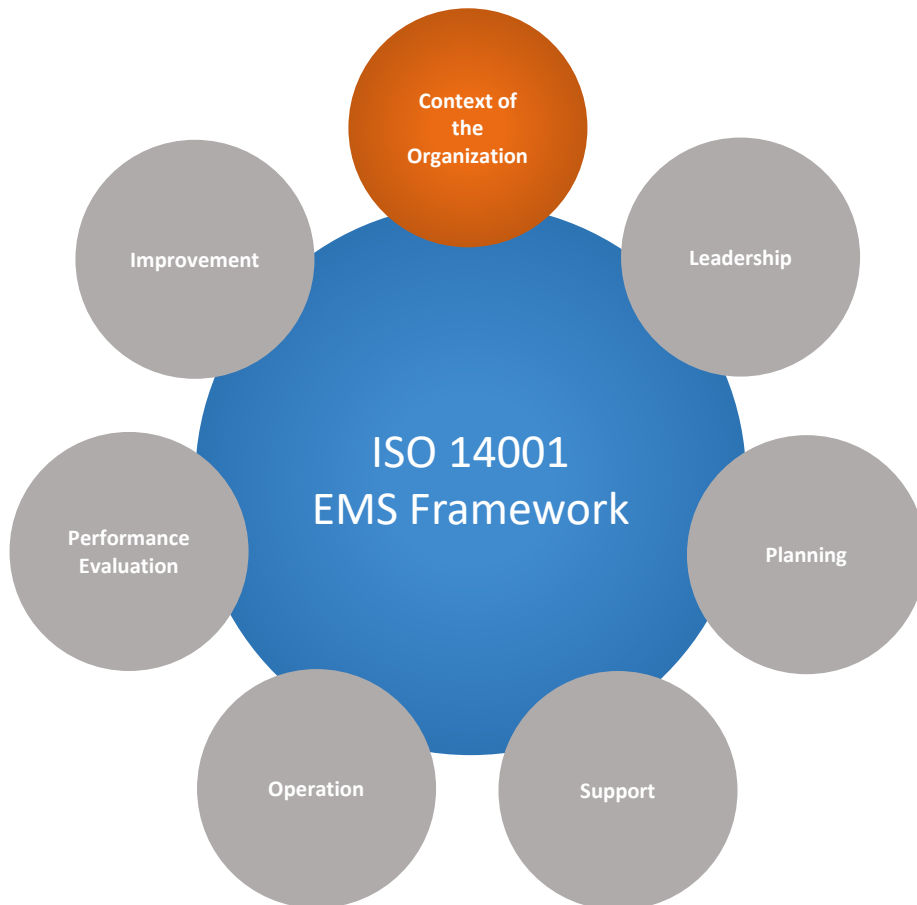
is this standard

so important?

ISO 14001:2015

Environmental Management System (EMS)





Clause 4: Context of the Organization

4.1 Understanding the organization and its context

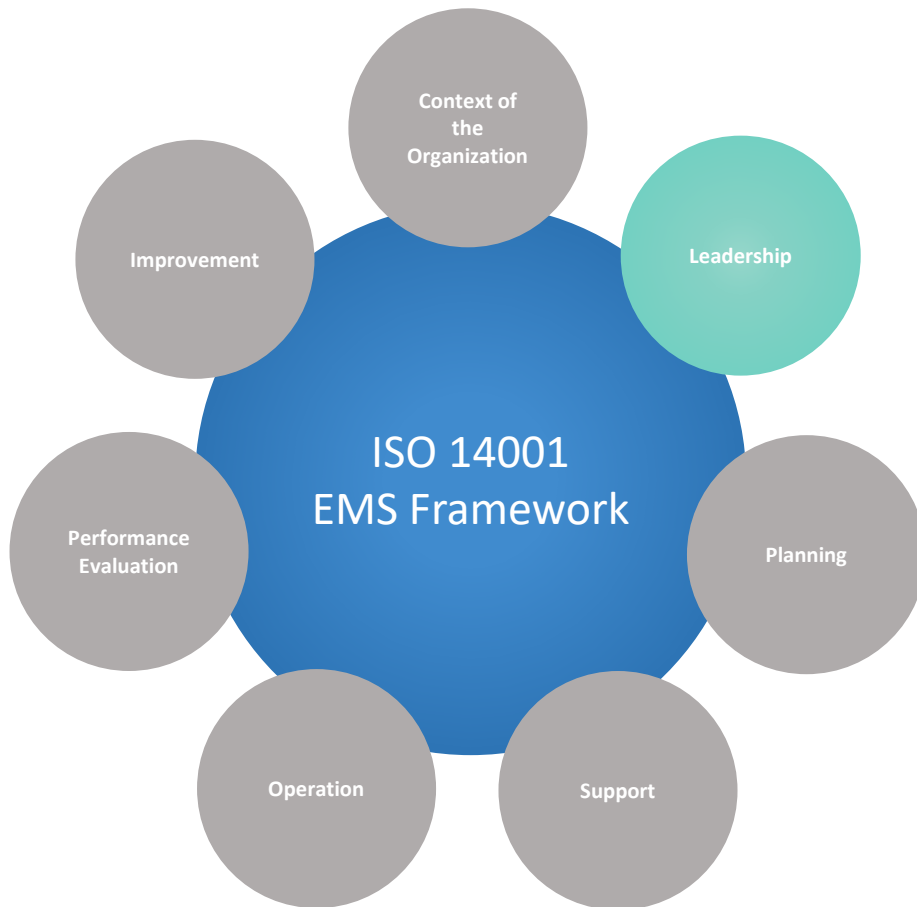
- External and internal issues

4.2 Understanding the needs and expectations of interested parties

- e.g., regulators, neighbours and employees

4.3 Determining the scope of the environment management system

- Location, products, issues, interested parties



Clause 5: Leadership

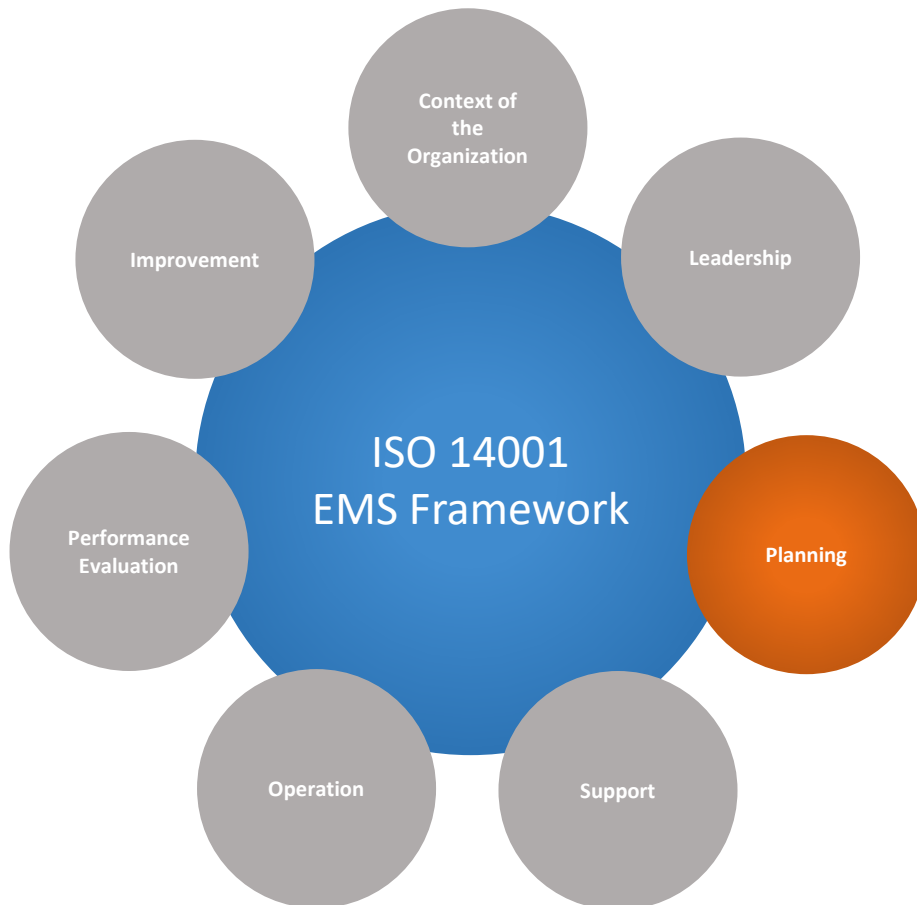
5.1 Leadership and commitment

5.2 Environmental Policy

- Framework for setting environmental objectives

5.3 Organizational roles, responsibilities and authorities

- Human Resources



Clause 6: Planning

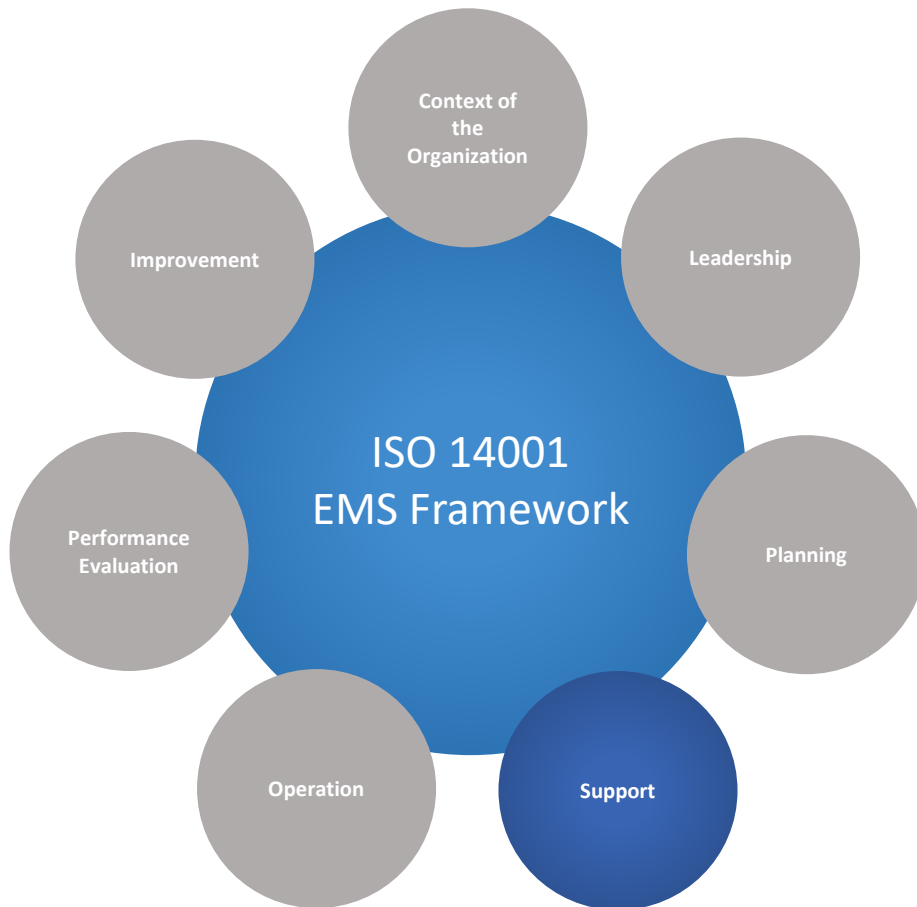
6.1 Actions to address risks and opportunities

- Plan how to meet the requirements and issues

6.2 Environmental objectives and planning to achieve them

- Plan of actions





Clause 7: Support

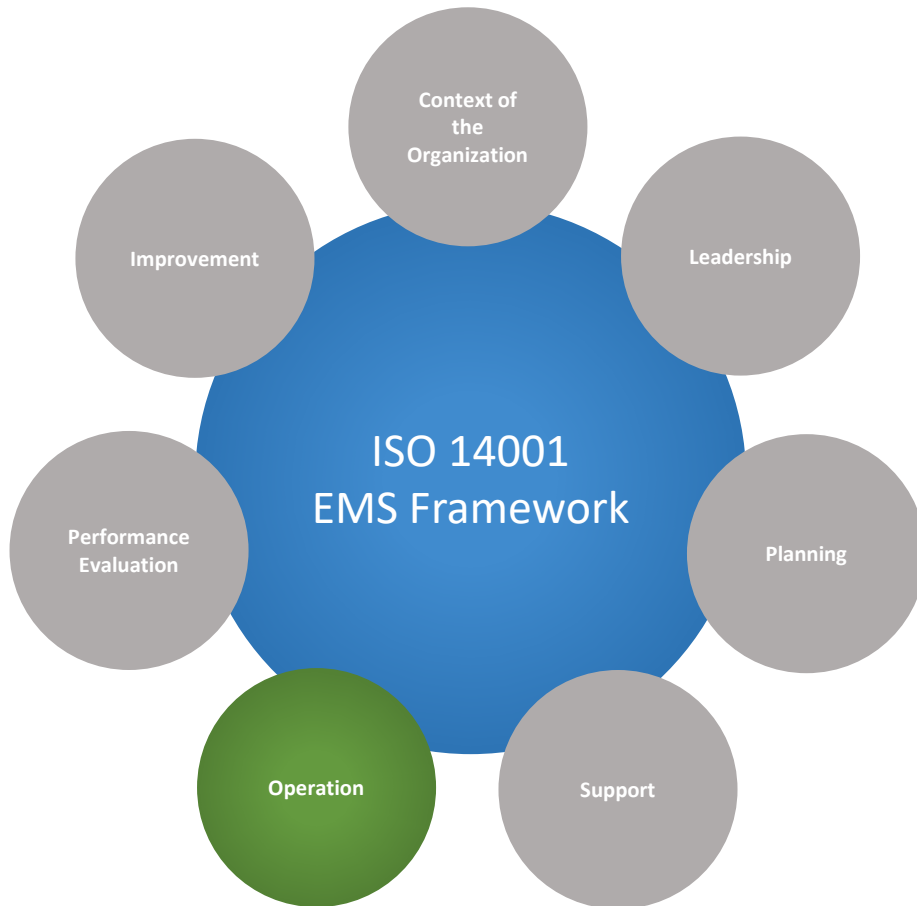
7.1 Resources

7.2 Competence

7.3 Awareness

7.4 Communication

7.5 Documented Information



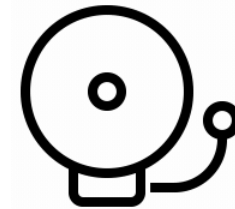
Clause 8: Operation

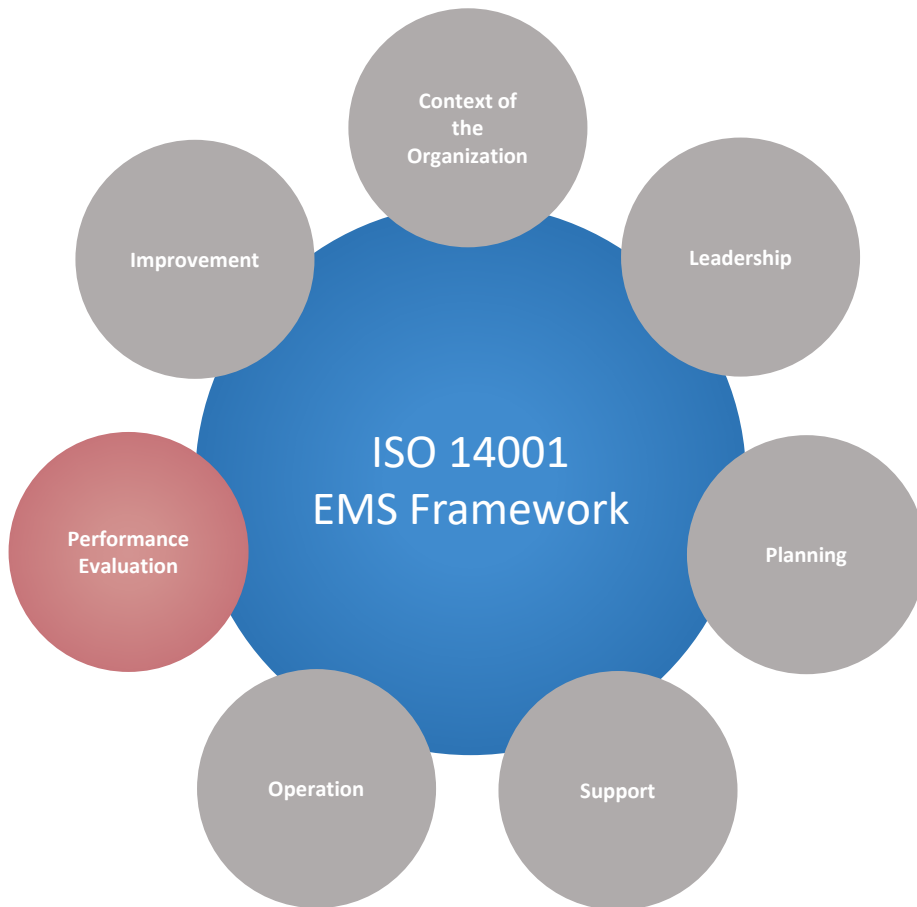
8.1 Operational planning and control

- Establish EMS processes

8.2 Emergency preparedness and response

- When the sewage hits the fan





Clause 9: Performance Evaluation

9.1 Monitoring, measurement, analysis and evaluation

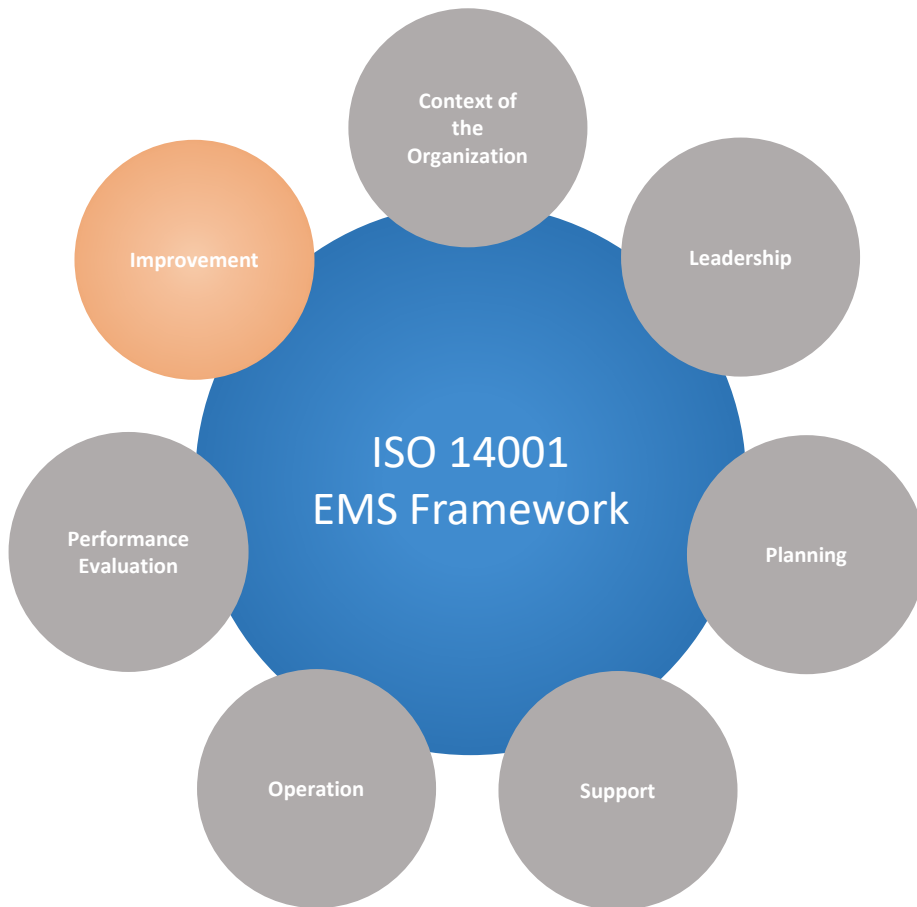
- Including regulatory compliance requirements

9.2 Internal Audit

- Planned intervals

9.3 Management Review

- Suitability, adequacy and effectiveness



Clause 10: Improvement

10.1 General

- Opportunities for improvement of the EMS

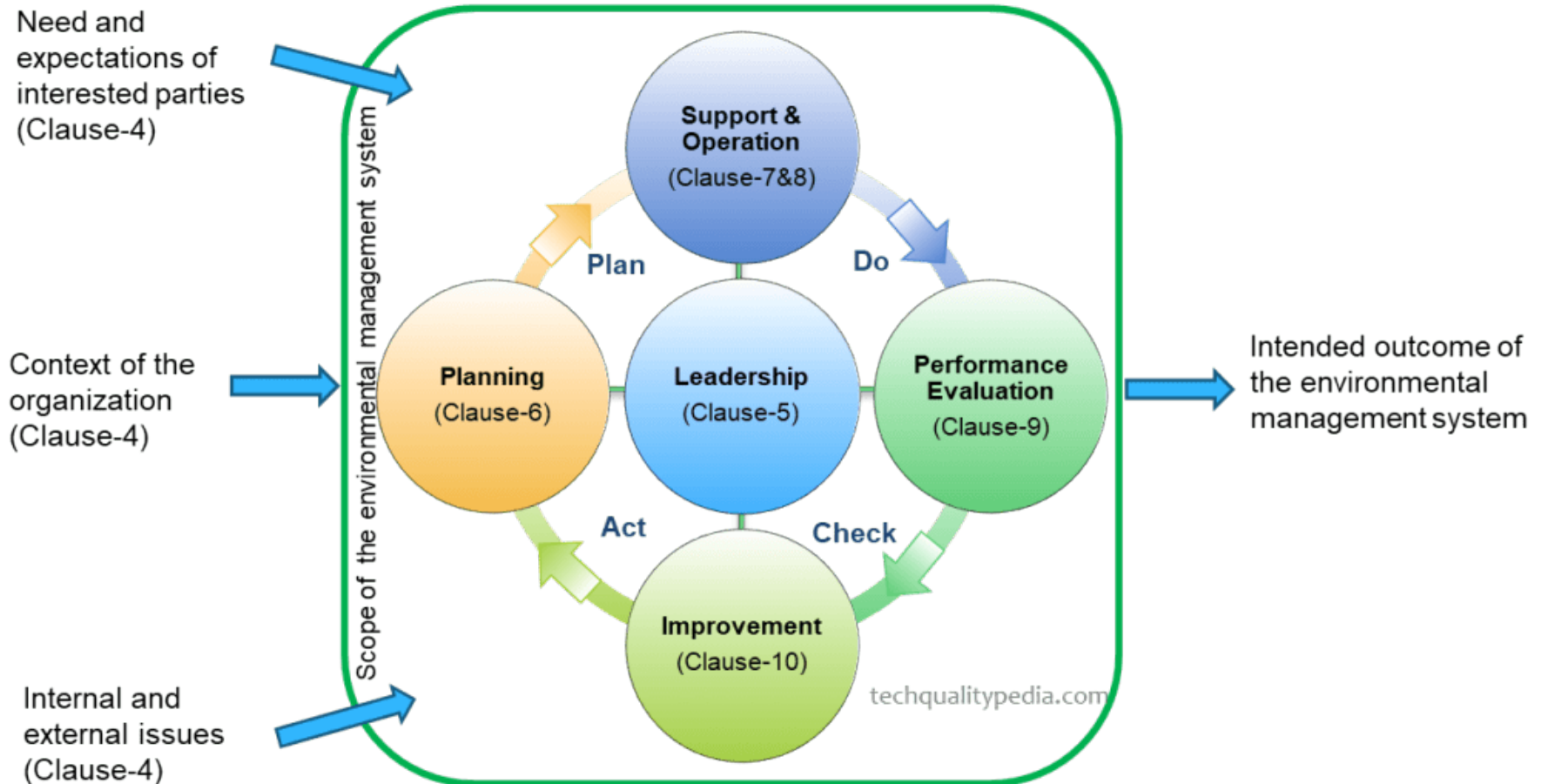
10.2 Nonconformity and corrective action

- Corrective action for prevention of repeats

10.3 Continual Improvement

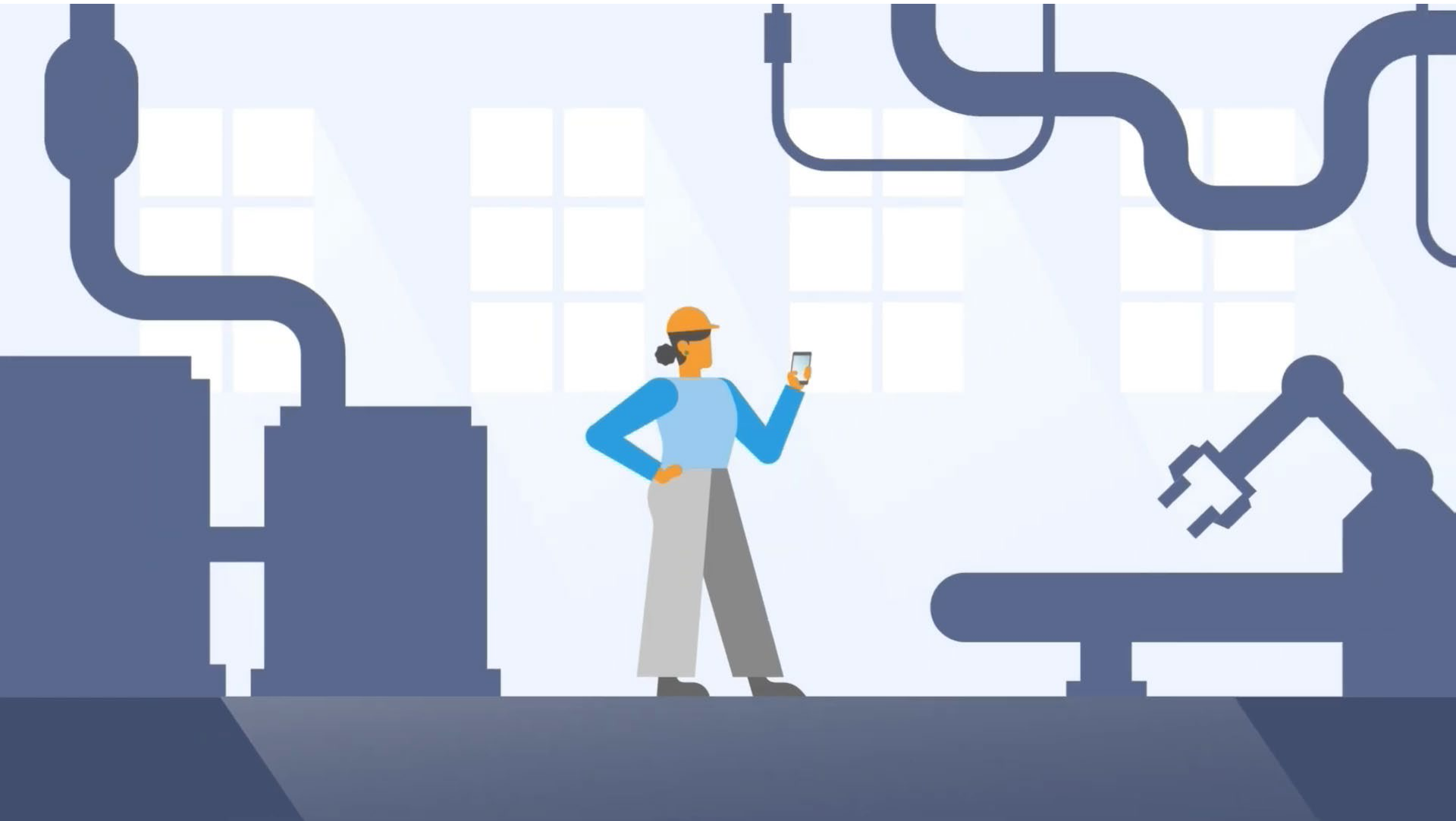
- Suitability, adequacy and effectiveness of the EMS

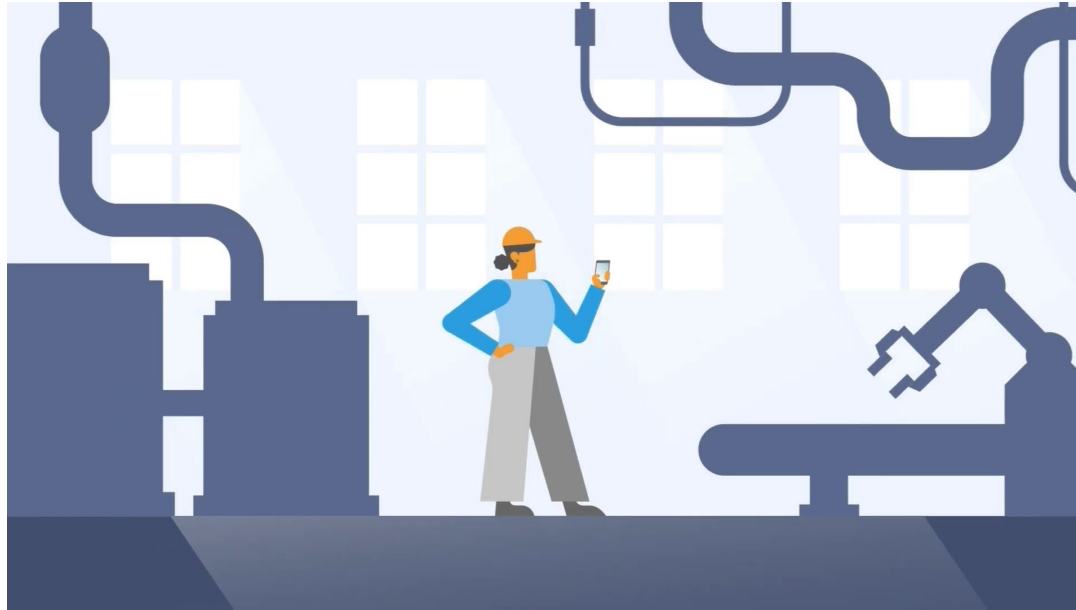
Environmental Management System (PDCA Model)



ISO 14001:2015

Environmental Aspects

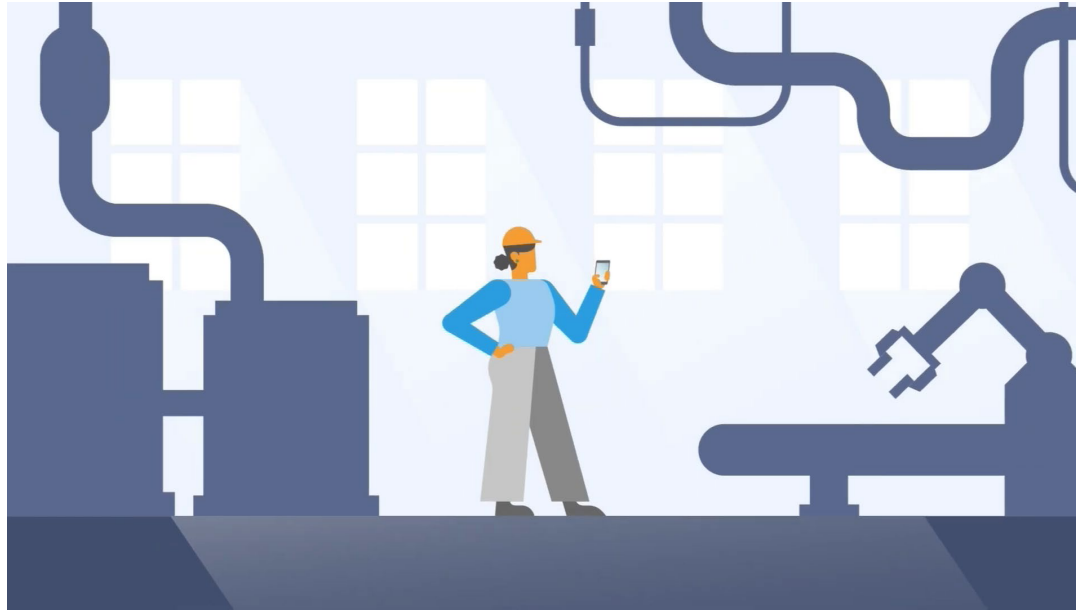




An **Environmental Aspect** is an element of an organization's activities, products or services that has or may have an impact on the environment.

This could be positive or negative.

Spills and the planting of trees are both examples of environmental aspects.

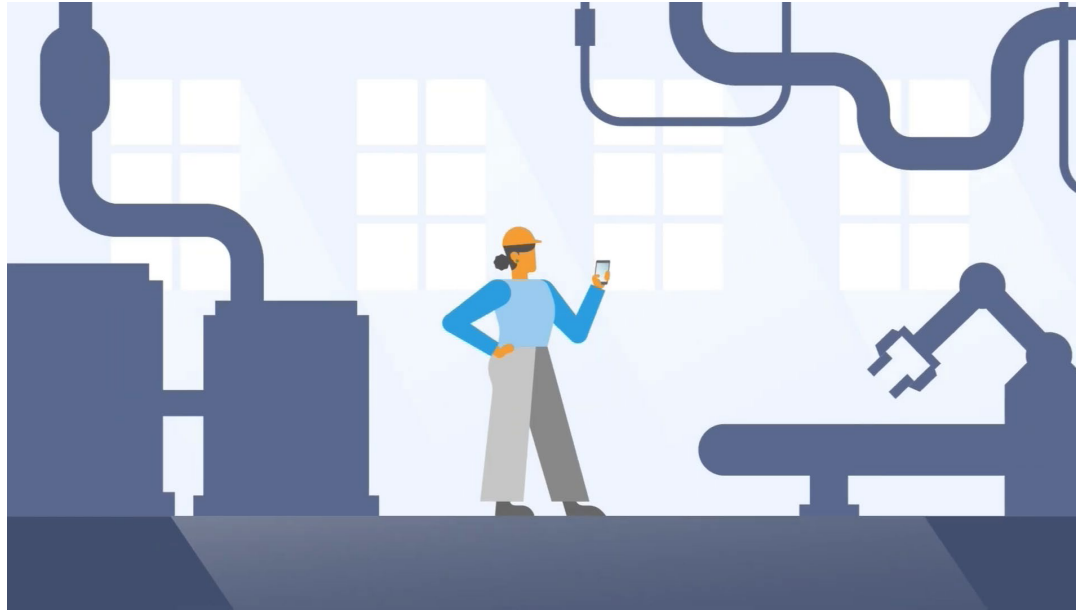


Direct, Environmental Aspect

e.g., backup diesel generators

Indirect, Environmental Aspect

e.g., scrap suppliers



A **Significant Environmental Aspect** is an element of an organization's activities, products or services which could have significant adverse impacts on the environment if not properly controlled.

Priority is given to managing these key aspects.

e.g., fugitive emissions from cokemaking operations



The Steel Company of Canada

ENVIRONMENTAL POLICY

At Stelco, we are committed to being an environmentally responsible company; to the protection of the environment; and, to the prevention of pollution. Our environmental management system establishes and reviews environmental objectives and targets to:

REDUCE

air, water and waste pollution by means of practices, operating procedures and programs;

IMPROVE

continually our environmental management system to enhance environmental performance; and

COMPLY

with environmental laws and our other environmental requirements.

Rev. July 2017

Thank you.

Agenda

Discussion Topics for Today's Meeting



1. Welcome
2. Review and Approval of Agenda
3. Review and Approval of Minutes of 27 July 2022 Meeting
4. Coke Battery Performance – Q3 2022
5. ISO 14001 Environmental Management System Overview
6. **CLC Format Discussion**
7. Community Feedback
8. Adjournment



CLC Format Discussion

Committee Discussion



- When this CLC group was established in 2011, committee members decided that meetings will be closed to the committee
- From time to time, we have received feedback from several neighbours interested in attending
- There have been a few meetings in the past, where we have invited community members to attend CLC meetings as Observers
- Stelco welcomes a group discussion on providing more opportunities for interested neighbours/stakeholders to participate in future CLC meetings as Observers until we determine if new spots on the Committee open up

Agenda

Discussion Topics for Today's Meeting



1. Welcome
2. Review and Approval of Agenda
3. Review and Approval of Minutes of 27 July 2022 Meeting
4. Coke Battery Performance – Q3 2022
5. ISO 14001 Environmental Management System Overview
6. CLC Format Discussion
7. **Community Feedback**
8. Adjournment



Agenda

Discussion Topics for Today's Meeting



1. Welcome
2. Review and Approval of Agenda
3. Review and Approval of Minutes of 27 July 2022 Meeting
4. Coke Battery Performance – Q3 2022
5. ISO 14001 Environmental Management System Overview
6. CLC Format Discussion
7. Community Feedback
8. **Adjournment**





The Steel Company of Canada